

Potato & Root Trailers



10 Tonne Potato & Root Trailer with optional Standard Hydraulic Tailboard



12 Tonne Potato & Root Trailer with optional Contractor Hydraulic Tailboard and optional Sprung Drawbar



Standard Front Window shown with blanking slide fitted



Non-standard Front Window, with built in hoop for roll-over sheet and vertical bars



14 Tonne Potato & Root Trailer with optional Standard Hydraulic Tailboard and optional Side Window

The AW Potato & Root Trailers have a long, low, tapered body with a 5mm thick floor and 3mm thick sides supported by wide side channels. They have a strong wide parallel chassis built from RHS and are fitted with high specification running gear. They can be fitted with either sprung or bogie suspension. There are 10 Tonne, 12 Tonne and 14 Tonne models available and 12 Tonne, 14 Tonne and 16 Tonne Potato & Root Trailers are available in our high spec *Ultima* range.

Standard Potato & Root Trailer Features :-

- Full Width Front Window c/w slide
- Hydraulic Tipping
- Hydraulic Brakes
- Commercial Ratchet type Park Brake
- Full Road Lighting
- Top Hinged Tailboard c/w Latching Bar
- Inspection Steps
- Rope Hooks
- Removable Drawbar Skid
- RHS Box Top

Optional Extras Available include :-

- Sprung Drawbar
- Standard Hydraulic Tailboard
- Contractor Hydraulic Tailboard
- Lever Operated Grain Chute
- Side Window
- Sheets (roll-over and fitted)
- Silage Sides
- Various Tyre Upgrades
- High Speed Running Gear
- Air Brakes c/w Load Sensing

Potato & Root Trailer Suspension Options :-



Sprung Axles Beam axles with heavy duty multi-leaf semi-elliptical sprung suspension for a smoother ride and reduced tyre wear



Bogie Axles Stub axles with 'rocking beam' suspension complete with 60mm diameter chrome pivot pin and bronze bushes

Potato & Root Trailer Optional Extras :-



Contractor Hydraulic Tailboard
Also showing upgrade to Ultima spec.



Sheet Rack
Can be headboard or chassis mounted



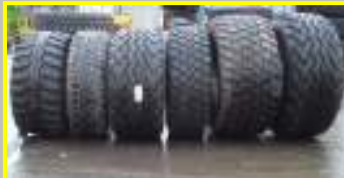
Sprung Drawbar



Standard Hydraulic Tailboard



Lever Operated Grain Chute



Tyre Upgrades
(many options available including Flotation tyres)

10 Tonne, 12 Tonne & 14 Tonne Potato & Root

	10 Tonne Potato & Root		12 Tonne Potato & Root		14 Tonne Potato & Root	
Body length (internal)	5505mm	18'	6100mm	20'	6700mm	22'
Body width (internal) av 6" taper	2210mm	7' 3"	2210mm	7' 3"	2210mm	7' 3"
Body height	1070mm	3' 6"	1070mm	3' 6"	1070mm	3' 6"
Floor thickness	5mm		5mm		5mm	
Side thickness	3mm		3mm		3mm	
Cubic capacity - grain	13.0m ³	457ft ³	14.5m ³	512ft ³	15.8m ³	558ft ³
Chassis	250 x 150 RHS		250 x 150 RHS		250 x 150 RHS	
Axle size (tandem)	80mm 8 stud		90mm 10 stud commercial		90mm 10 stud commercial	
Brake size	350 x 60mm		406 x 120mm		406 x 120mm	
Wheel track	1800mm	71"	1800mm	71"	1800mm	71"
Tyre size	385/65R22.5 'super single'		385/65R22.5 'super single'		385/65R22.5 'super single'	
o/a length	7050mm	23'	7655mm	25'	8255mm	27'
o/a width - grain	2440mm	8'	2440mm	8'	2440mm	8'
o/a width - silage	2560mm	8' 5"	2560mm	8' 5"	2560mm	8' 5"
o/a height - grain	2285mm	7' 6"	2285mm	7' 6"	2320mm	7' 8"
o/a height - silage (inc canopy)	mm		mm		mm	
Max tipped height - grain	5715mm	18' 9"	6200mm	20' 4"	6550mm	21' 6"
Unladen weight	3.5 Tonne approx		3.8 Tonne approx		4.3 Tonne approx	