

CASE IH

JXU MAXXIMA



Safe and easy access.

Wide-opening doors provide safe and easy access to the flat deck cab.

Armchair comfort.

The fully adjustable, air suspension seat has everything built-in to give the correct operator support and comfort, even when working on rough terrain.

Power at the rear end.

A choice of high capacity hydraulics with manual or electronic sensing provides the powerful rear three point hitch with a maximum lift capacity of up to 5060kg.

Superior control.

Three remote valves are available with up to 59 litres of dedicated hydraulic oil flow to power rams, pumps and hydraulically operated implements. In addition, a 39.5l/min oil pump is dedicated to steering and lubrication.

Smooth and easy every time.

The steering column mounted Powershuttle lever provides instant directional changes and is standard with the versatile 24 x 24, two-speed Powershift transmission.

Large capacity fuel tank.

Designed for easy splash-free filling, the JXU MAXXIMA fuel tank, with up to 167 litres capacity means less refuelling and more productivity.

Room and a view.

The deluxe low profile cab with spacious, functional interior and ergonomically designed controls, is ideal for dairy or mixed farming operations that require a front loader or work inside sheds and low buildings.

Information at a glance.

New instrumentation cluster, gives clear and accurate readouts of all the tractor's main operating functions. A new fully integrated performance monitor is available.

Excellent service access.

An 'A' pillar mounted exhaust and fully tilting one-piece engine hood, ensure easy maintenance and good visibility even when a front loader is fitted.

Rugged enough to handle the load.

The robust four-wheel drive front axle with excellent ground clearance, fully locking differentials and a 55 degree steering angle provide a tight turning circle. Two-wheel drive is available on all models.



PERFORMANCE, ECONOMY AND RELIABILITY – JXU MAXXIMA DELIVERS

- Four high performance engines from 72 to 100hp(CV)
- Tier II compliant for low emissions
- Choice of transmissions

With its new range of engines and proven design features for everyday work around the farm, the JXU MAXXIMA will prove a powerful asset to livestock, dairy, or arable farming businesses.

The lightweight tractor with the heavyweight performance.

For their size the JXU MAXXIMA can achieve high levels of productivity, incorporating many class leading features to give farmers a significant advantage when working in grassland, cultivation and crop-care operations.

Powered by a new series of environmentally friendly engines. JXU MAXXIMA are powered by a new family of Case IH engines shared with MXU MAXXUM and designed specifically for agricultural applications with high level of performance, low fuel consumption and low emissions.

Two-speed Powershift and Powershuttle transmission.

On-the-move changes and simultaneous speed shifting is effortless using the right thumb switch on the speed lever. Around the yard or in the field the JXU MAXXIMA is remarkably manoeuvrable with a tight turning radius, to negotiate gateways and stock pens; a superb four-wheel drive system, with fully locking differential control - all at the push of a button.

You can also opt for the simplicity of the 12x12 Synchro Shift transmission with shuttle reverser or for the 20x12 Synchro Shift transmission with creeper for specific applications that require very low speeds.

Superior technology for everyday applications. With the latest style of instrument cluster the compact information display is easy to understand and really saves you time - it is also available with an integrated performance monitor. The new cab is quieter, has an electronic thermostat air conditioning control (where specified), and has improved visibility for loader work. Your JXU MAXXIMA features a three speed PTO 540/540E/1000rpm with ground speed for easy operation of power driven implements.

High capacity hydraulics give JXU MAXXIMA tractors unrivalled performance in their class.

Powerful, quiet and environmentally friendly.
New powerful Tier II compliant 4.5 litre engines deliver high performance with lower fuel consumption. Engine Service intervals of 600 hours will save you further money and minimise running costs.

Case IH LRX loader.
Choice of purpose-designed tractor/loader combinations for multi-application productivity from day one. The quality of a factory fit solution with a choice of LRX loader models and versions will enable you to match your needs to an appropriate solution.

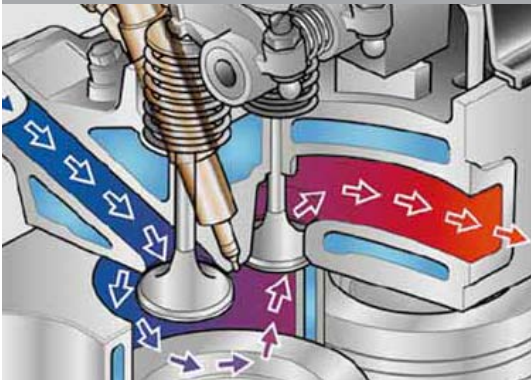
Case IH JXU MAXXIMA tractors 72-100hp(CV). See for yourself how the new JXU MAXXIMA can enhance your farming operation.



Four-cylinder diesel engines. This latest generation of Case IH engines is more powerful, quieter and more economical.



CrossFlow cylinder head for reduced fuel consumption.



Turbocharged engines in JX1090U and JX1100U enhance performance.



POWER ON DEMAND, POWER IN RESERVE

- New, more powerful 4.5 litre engines
- High power to weight ratio
- Enhanced structural design for lower wear and reduced noise
- Choice of ratings between 72 and 100 horsepower

With its new engine the JXU MAXXIMA is just the job for a full working day around the farm. Springing to life for an early start in all weathers, this engine lets you get straight down to work. It will not shy away from a long day in the field either, giving you all the power you need - and some. The JXU MAXXIMA delivers on demand, and has plenty of power in reserve.

Torque in reserve for PTO and tillage operations. JX1070U and JX1080U tractors are equipped with naturally aspirated diesel engines delivering 72 and 82 horsepower respectively. The 91 horsepower JX1090U is light turbo-charged while the JX1100U is fully turbo-charged with a wastegate valve and a 100 horsepower output.

All four engines are designed to generate high power for efficient working speeds during PTO and tillage operations. A large torque reserve of up to 37% is available, so the tractors can cope with varying ground conditions and handle heavy loads.

Environmentally friendly, economical and quiet. Regardless of the model you choose for your farming requirements, all JXU MAXXIMA feature these completely new engines that meet Tier II emission regulations.

These engines are also designed to reduce fuel consumption, using a cross flow cylinder head design and optimum air swirl fuel mixture for efficient combustion. A grid heater is available for a smooth start, even in really cold conditions. All in all, the new engines ensure that your JXU MAXXIMA will perform at maximum efficiency hour after hour - quietly and economically.

Economical cooling system. All JXU MAXXIMA tractors feature a viscous fan to improve cooling and fuel efficiency. This viscous fan helps to save fuel, particularly at low ambient temperatures, and boost engine output.

More time in the field. To help farmers stay working longer the JXU MAXXIMA is fitted with an easy-fill fuel tank with up to 167 litres capacity.

High torque 4.5 litres engines with power in reserve.



Powershuttle with fingertip control.



Two-speed Powershift transmission with thumb shift control.



20 x 12 creeper transmission can be specified for low forward speeds.



PRECISE, SMOOTH AND EASY

- Wide choice of transmissions
- Effortless Powershift in two speed ranges
- Powershuttle for ultimate manoeuvrability

Designed to be able to take on virtually any job, the JXU MAXXIMA is available with a wide choice of transmissions so your new tractor is ideally matched to your operating conditions. From the open road to the tightest corners around the yard, JXU MAXXIMA transmissions give you the edge for keeping ahead of schedule.

Engineered precision for total reliability. From the 12 x 12 Synchro Shift transmission to the 24 x 24 with two-speed Powershift and Powershuttle, all units feature Case IH engineering excellence to ensure high performance and durability.

Perfectly matched transmission ratios. The versatile 24 x 24 two-speed Powershift transmission will allow the operator to change quickly through the gears without interruption of power. With eleven speeds in the critical 4 – 12kph working range, operators can always select the right speed for their job.

Powershift at the press of a button. Simply press the thumb control on the speed lever and the transmission will take care of the rest. Operators can shift under full power, with a speed decrease of 15% or increase of 18%. The benefits are immediately clear during transport, draft work and PTO operations because there is no duplication of speeds. Levers are positioned to the right of the seat and can be operated on-the-move.

More choice for greater versatility. The JXU MAXXIMA can be driven at up to 40kph for moving rapidly between tasks, or handling haulage jobs efficiently on the road.

And with a total of twenty forward and reverse speeds below 15kph down to 1.6kph, the JXU MAXXIMA can take on low speed seeding, planting or turf care operations.

A 20 x 12 Synchro Shift transmission with creeper is also available for applications such as planting, which require speeds as low as 0.2kph.

Powershuttle takes the strain out of loader work. Selected from a lever on the steering column, the Powershuttle moves through neutral to shift between forward and reverse in any gear. Both the operator's hands can remain on the steering wheel while operating the lever, saving valuable time and effort during loader operations or when working in tight spaces.

Loader work made quick and easy.



Two-wheel drive is available for all JXU MAXXIMA models.



Four-wheel drive and positive differential lock control for maximum power transfer.



The tilt / telescoping steering column is adjustable to suit any operator.



HIGHER TRACTION, HIGHER PERFORMANCE

- Hold your ground effortlessly with four-wheel drive
- Steerable fenders for really tight cornering
- Choice of brake configurations to match your work

Exceptional ground clearance and hydrostatic power steering means the operator benefits from light and easy manoeuvring in tight spaces, plus a fast turn-round at the headland. All JXU MAXXIMA tractors can be specified as two or four-wheel drive.

Four-wheel drive for maximum efficiency. By choosing four-wheel drive, more power is converted into drawbar pull, so operators can enjoy greater stability, improved traction and increased fuel efficiency.

The fully integrated four-wheel drive system is electro-hydraulically engaged on-the-move, at the flick of a switch mounted on the right console.

A fully locking front differential lock is incorporated into the axle. This operates simultaneously with the rear lock at the touch of a button.

Impressive steering to get you in and out of a tight spot.

With a steering angle of 55°, operators can make the tightest turns around the yard or in the field, with the minimum damage to soil, crops and tyres. Track width is fully adjustable to suit a wide variety of farming applications.

The JXU MAXXIMA can now be fitted with steerable fenders to get the most out of each manoeuvre.

Positive straight line braking in all conditions. The hydraulically operated self-equalising, self-adjusting, wet disc brakes offer total braking efficiency with the minimum of pedal effort. All four-wheel drive models are fitted with four-wheel braking as standard. A hydraulic braking system is available for simultaneous tractor and trailer braking.

Complete driveline protection. The driveshaft is fully guarded by a rugged steel driveline shield to eliminate any crop wrapping when baling over a dense swath. The steering ram is located directly behind the front-axle casing so it is out of the way and you can make the most of the JXU MAXXIMA's exceptional ground clearance.

Tight turning circle. The JXU MAXXIMA gives you a rapid turnaround at the headland or in the yard.



Four wheel braking is standard on all 4WD JXU MAXXIMAs.



High clearance and driveline guards prevents the risk of crop wrapping.



Up to three remote valves and two mid-mounted valves can be fitted to the JXU MAXXIMA.



Rear fender controls make implement mounting and adjustment safe and easy.



Three-speed PTO 540/540E/1000rpm with electro-hydraulic engagement from inside the cab.



SUPERIOR POWER, RESPONSIVE PERFORMANCE

- Hitch supplied with up to 59l/min for dynamic operation
- Three remote valves available at rear
- Two mid-mount valves supplied with loader
- Three speed PTO for power and economy

Case IH tractors are renowned for their cost-effectiveness and versatility. The JXU MAXXIMA certainly lives up to expectations.

They are fitted with a dedicated 59 litre per minute pump as standard. Yet again, the JXU MAXXIMA really delivers.

Electronic hitch system for precision control. The customer has a choice of the mechanical or electronic lower link sensed hitch controls (EHC).

The electronic three-point hitch utilises the ultimate in electronic sensing for draft and position control, with easy to use dials located on the right hand console. The system incorporates Hitch Ride Control for the safe transportation of mounted implements at high speed. A radar system is also available to automatically respond to wheel slippage and maintain optimum performance.

The mechanical system features a fast raise and lower control for rapid, easy headland turns.

Three remotes plus mid-mounts for loader. To power implements and trailers, up to three auxiliary valves can be fitted, each with its own number-coded control lever on the right-hand console. A joystick control lever can be fitted for simultaneous two-valve operation. Tractors supplied with a loader have two mid-mounted valves operated by a joystick, which features a pushbutton for operating a third loader-mounted service.

Power and economy from the three-speed PTO.

JXU MAXXIMA tractors feature a shiftable independent ground speed PTO system with electro-hydraulic engagement for smooth, efficient power transfer.

With this versatile three-speed, single-shaft system, either 540, 540E or 1000 is hydraulically selected using a lever at the rear of the main console, giving a smooth power take-up and eliminating any shock loading on the tractor or implement.

Electronic Hitch Control (EHC) is available for the ultimate in implement control.



Hitch Ride Control system for safe transportation of mounted implements.



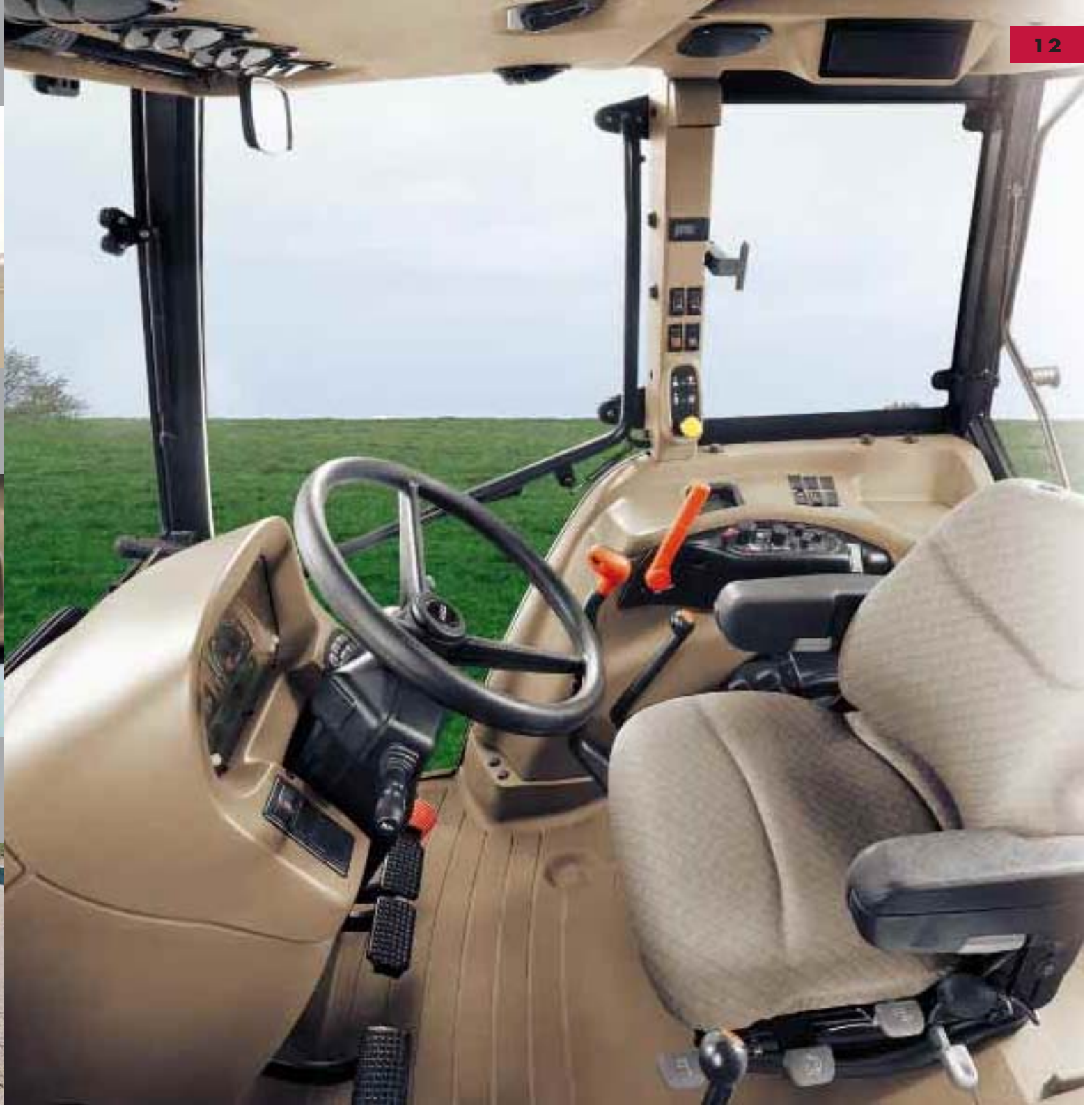
A choice of seats is offered, from mechanical to deluxe air suspension with swivel.



Case IH majors on ergonomics – logically laid out controls are easy to learn and within easy reach.



New roof design for better visibility with loader.



ARMCHAIR COMFORT WITH TOTAL CONTROL

- Industry-leading business class cab
- Excellent visibility and access
- State-of-the-art instrumentation and ergonomics

With livestock and dairy farmers in mind, these tractors respond to rapid changes in working conditions and are intended for moving on quickly from one task to the next. Designed and built for maximum operating efficiency, the JXU MAXXIMA features an industry-leading cab that will help farmers stay productive when the working conditions get tough.

Quiet, safe and comfortable. Sound levels have been reduced by another 2.5dB(A) to further enhance the operator's superb environment, surrounded by more than 5.3m² of tinted safety glass.

The ergonomically designed interior offers armchair luxury and a telescopic/tilt steering column adjustable to any size of operator for the healthiest driving posture.

Excellent visibility. With its low overall height, sloping hood and 'A' post mounted exhaust, the cab not only gives an uninterrupted view of the working area to the front, side and rear, but with the new front roof design also provides improved visibility for loader work. Telescopic mirrors are also available.

Easy-to-read instrumentation cluster. The instrumentation cluster combines analogue and digital displays to provide a clear overview of the tractor's major functions. An integral performance monitor is available to record information on engine and PTO speeds, plus area worked and distance travelled. A true ground speed sensor (radar) is also available to record optimum operating speed to simplify precision planting, spraying and fertiliser applications.

Ergonomically positioned controls. The tractor's main gear selection, hitch and PTO controls are logically laid out on the right-hand side console so operators never have to lean over or turn to use them.

A keypad located conveniently on the lower right of the instrumentation cluster is used to operate the displays.

The high flow cab ventilation system ensures operator comfort. In addition air conditioning with an electronic thermostat control is available.

State-of-the-art instrument cluster. Clear and easy to read, an integrated performance monitor can be specified.

Superb lighting. Powerful halogen work lights mounted in the cab roof plus full road lighting give excellent illumination for working at night.



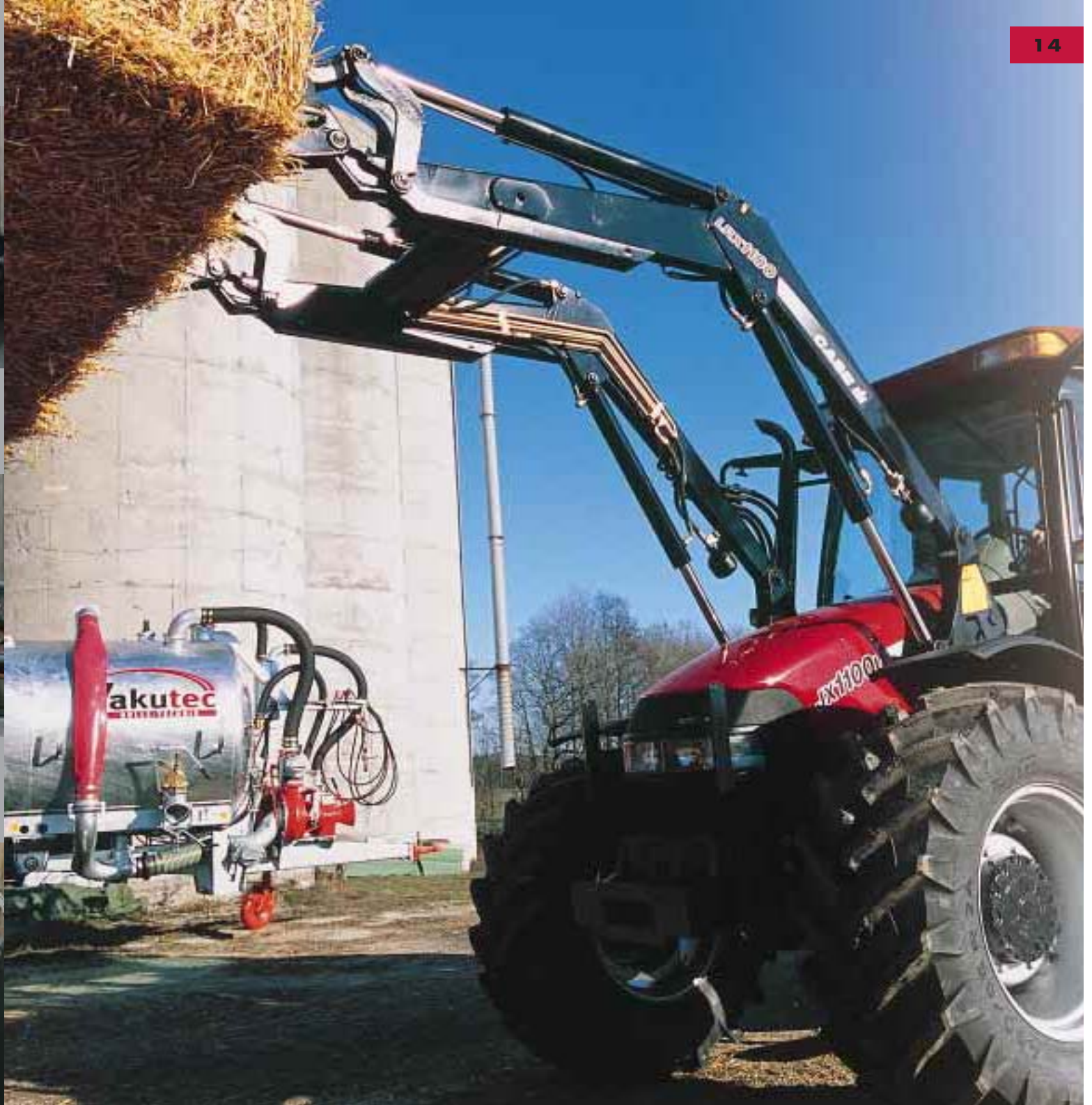
Easy loader connection. Drive the tractor between the loader arms ...



... hook up the LRX Fast Attach coupling ...



... raise the loader to engage the hooks, lock in place, fold up the parking stand - and away you go.



CASE IH LRX LOADERS MEAN BUSINESS

- Case IH LRX loader ready-fitted
- Outstanding lift capacity and lift height
- Unique LRX Fast Attach system

Case IH want you to reap maximum productivity from your investment. LRX loaders are designed and robot welded to the highest specifications using fine-grained, lightweight crane steel. The loader tower mountings and hydraulic piping are installed on the tractor assembly line.

LRX loaders are purpose-designed for JXU MAXXIMA tractors for time saving easy-on/easy-off operation - thanks to the unique Fast Attach system.

Integrated loader controls. The loader is part of the tractor, and not a retrofit as offered by other manufacturers, so the controls are integrated into the right-hand control panel. The joystick features an additional pushbutton for a third hydraulic connection for operating grapples and grabs etc.

The mid-mount valves and couplers are ready-fitted to the tractor and pipe routing is designed to take the shortest path for the most responsive loader performance you will ever experience.

Outstanding loader performance. Performance is not only down to responsive controls. JXU MAXXIMA tractors are equipped with spectacular manoeuvring features such as PowerShuttle and a really tight turning circle.

The cab roof has also been redesigned to provide improved visibility when working with a loader. All in all, the JXU MAXXIMA and LRX are a dynamic combination made for each other. LRX loaders are available with non self-levelling, mechanical self-levelling or hydraulic self-levelling mechanisms to match specific needs.

Full range of Case IH buckets and tools. With the LRX loader you can take delivery of the right tool for the job. With earth buckets, manure forks, grapple buckets, silage forks, bale forks, wrapped bale handlers and pallet forks (just to mention a few), you can choose the LRX tools for precisely whatever chores you have in mind.

Case IH LRX loader implements. For every lifting and loading job around the farm there is a whole range of buckets, grabs and tools to choose from.



Easy access to ...



... radiator, air filter and air conditioning condenser for simple cleaning and servicing.



Checking and topping up with engine oil – without lifting the hood.



QUICK AND EASY SERVICING

- Daily checks are done in no time
- Long service intervals
- Extensive dealer network for original Case IH spares

Reliability, long-life and minimum maintenance are vital to achieve maximum profitability. That is why JXU MAXXIMA tractors are designed to give years of trouble-free operation and keep service and maintenance costs to a minimum.

No need to open the hood for routine checks. Routine servicing and daily checks can be carried out at ground level, with excellent access from either side, even with front loader tower mounts fitted. Long service intervals and spin-on filters minimise downtime. The clutch and brakes are self-adjusting and the cab air filter can be cleaned or changed from outside.

Easy access for cleaning and servicing. Access to main components is made easier by the front opening hood that is supported on gas-assisted cylinders. The single piece hood lifts higher to give clear access for cleaning the cooling radiator and, where applicable, the air-conditioning condenser.

Long service intervals. JXU MAXXIMA engines have been designed to give thousands of hours of hard work before a major overhaul, engine service interval has been raised to 600 hours to save you money and time.

Genuine Case IH parts readily available. When more extensive maintenance is required you can rely on the Case IH dealer network, offering all the skills of highly trained specialists using only genuine Case IH parts.

Refuelling at ground level with the easy access nozzle.



Cab filters can be removed without using tools for easy and quick maintenance.



A performance monitor is available, on which you can store two different service settings.



	JX1070U	JX1080U	JX1090U	JX1100U
ENGINE				
Number of cylinders / type	4 / Naturally aspirated	4 / Naturally aspirated	4 / Light turbocharged	4 / Turbocharged + Wastegate
Bore / Stroke (mm)	104 x 132	104 x 132	104 x 132	104 x 132
Capacity (cm ³)	4500	4500	4500	4500
Rated engine power ISO TR 14369 - 2000/25/EC [kW/hp(cv)]	53 / 72	60 / 82	67 / 91	73.5 / 100
... at rated speed (rpm)	2500	2500	2500	2500
Maximum torque engine (Nm / rpm)	280 / 1400	320 / 1400	350 / 1400	370 / 1400
Torque rise (%)	36	37	37	35
Optimum fuel consumption (g/kWh)	224	226	218	217
Fuel tank capacity (litres) Standard / Optional	105 / 127	105 / 127	127 / 167	127 / 167
Exhaust	Silencer on side along 'A' post			
TRANSMISSION				
Type Standard	Synchro Shift, 4 speeds in 3 ranges			
Number of speeds Standard / with creeper* (FxR)	12x12 / 20x12	12x12 / 20x12	12x12 / 20x12	12x12 / 20x12
Type Optional	Two Speed Powershift / Powershuttle			
Number of speeds (FxR)	24x24	24x24	24x24	24x24
40 kp/h transmission	●	●	●	●
DRIVE AND STEERING				
4WD engagement	Electro-hydraulic			
Steering system	Hydrostatic, Load Sensing-system			
Steering angle 2WD / 4WD (°)	55 / 55	55 / 55	55 / 55	55 / 55
Turning radius 2WD / 4WD (m)	3.77 / 3.90	3.77 / 3.90	3.77 / 4.05	3.77 / 4.05
2WD	○	○	○	○
POWER TAKE-OFF				
Type	Electro-hydraulic			
Speeds (rpm)	540 / 540E / 1000 + Ground speed			
PTO speed / engine speed (rpm)	540 at 2199			
	540E at 1715			
	1000 at 2382			
Shaft type	Exchangeable 6/21 spline, 1 3/8"			
HYDRAULIC SYSTEM				
Max. pump flow (l/min) / System type main hydraulic	59 / Fixed displacement pump, Load Sensing circuit			
Steering and lubrication pump (l/min)	39.5			
Control type	Mechanical (MHC) or Electronic Hitch Control (EHC) with hitch ride control			
Max. lift capacity (kg)	4550	4550	5060	5060
Max. number of remote valves	3	3	3	3
Category type	Cat. II	Cat. II	Cat. II	Cat. II
CAB				
Cab noise level dB(A)	75.5	75.5	75.5	75.5
Air suspension seat	●	●	●	●
Air conditioning	○	○	○	○
WEIGHT *				
Minimum weight 2WD / 4WD (kg)	3550 / 3850	3750 / 4050	3850 / 4250	3850 / 4250
Permissible total weight (kg)	5400	5700	6200	6200

	JX1070U	JX1080U	JX1090U	JX1100U
DIMENSIONS ¹⁾				
A Overall length (mm)	3914	3914	3914	3914
B Minimum overall width across rear fenders (mm)	2012	2012	2012	2012
C Height to top of cab (mm)	2534	2586	2578	2578
D Height at centre of rear axle to top of cab (mm)	1870	1870	1870	1870
E Ground clearance 2WD / 4WD (mm)	376 / 456	376 / 456	376 / 456	376 / 456
F Wheelbase 2WD / 4WD (mm)	2342 / 2314	2342 / 2314	2342 / 2314	2342 / 2314
G Track settings				
Front 2WD / 4WD (mm)	1401-2170 / 1301-2204	1401-2170 / 1301-2204	1401-2170 / 1301-2204	1401-2170 / 1301-2204
Rear 2WD / 4WD (mm)	1420-2204	1420-2204	1420-2204	1420-2204
STANDARD TYRES ^{1), 2)}				
Front 2WD / 4WD	7.50-16 / 11.2 R24	9.00-16 / 13.6 R24	10.00-16 / 380/70 R24	10.00-16 / 380/70 R24
Rear	16.9 R30	16.9 R34	480/70 R34	480/70 R34

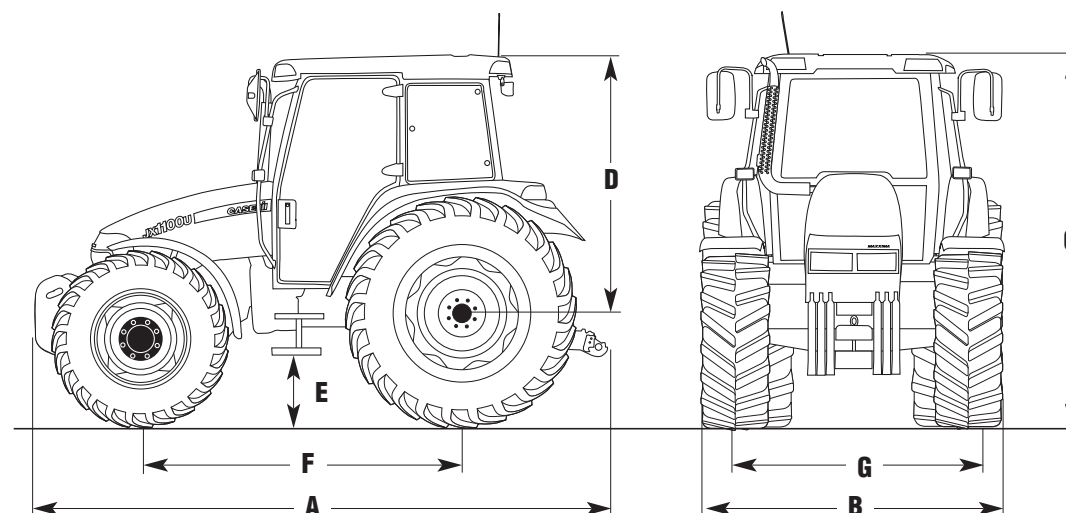
(*) to comply with legislation and specification in your country ¹⁾ With Standard tyres ²⁾ Other tyre options on request ● Standard ○ Optional at extra cost - Not available

LRX LOADERS

	LRX1095	LRX1100	LRX1200
Max. lift capacity (kg)	2050	2532	2310/2582 ³⁾
Max. height (mm)	3755	3755	4084
Power range (hp)	60-95	70-95	80-120

³⁾ Hydraulic self-levelling Model

DIMENSIONS




Powering agriculture for more than 160 years

It was back in 1842 that we started creating powerful machines for the farming sector, and we have never stopped. Over these long years we have gathered, preserved and made good use of all the tradition, experience and prestige of those who, like us, have the present and future of the people who work the land at heart. The superb range of tractors, balers, Axial-Flow and conventional combines that Case IH offers reflects the heritage of **Case**, **International Harvester** and **David Brown**, three great agricultural equipment producers and brands, and all the power, productivity, reliability and performance essential to improving your farm's profitability in today's market.

Walk into any Case IH dealership with high expectations and you will not leave disappointed: you will find powerful, tough, efficient machines with an array of top-range features, an unrivalled after-sales service, ready access to all the guaranteed Case IH genuine parts, and customised financial packages from **CNH Capital** created especially for agricultural businesses.

In short, you will find the world of Case IH: **Power by tradition.**



 Safety never hurts! Always read the Operator's Manual before working with any equipment. Inspect equipment before using it, and be sure it is operating properly. Follow the product safety signs, and use any safety features provided.

This literature has been published for worldwide circulation. The standard and optional equipment and the availability of individual models may vary from one country to the next. Case IH reserves the right to undertake modifications without prior notice to the design and technical equipment at all times without this resulting in any obligation whatsoever to make such modifications to units already sold. Whilst every effort is made to ensure that the specifications, descriptions and illustrations in this brochure are correct at the time of going to press, these are also subject to change without prior notice. Illustrations may show optional equipment or may not show all standard equipment.

Case IH recommends **AKCELA™** lubricants

Case International Limited - Cranes Farm Road - Basildon - Essex - SS14 3AD

© 2004 CASE IH - www.caseih.com - JXU MAXXIMA-UK-BR - Free phone 0800 015 1953 (UK) or 1 800 523 128 (ROI) - Printed in Italy - 07/04 - TP02 - Cod. N. 4C0002/INB

CASE IH

Power by tradition



CASE IH IS A BRAND OF CNH.
CNH: A WORLD-LEADING MANUFACTURER OF TRACTORS, COMBINES AND BALERS.