

AW TRAILERS

Bale Trailers



The AW range of Bale Trailers have High Specification Running Gear and a Strong, Wide Parallel Chassis built from PFC or RHS.

They are suitable for carrying bales, boxes or pallets.

Stock containers are available to suit the Bale Trailer range. We can also manufacture a Bale Trailer to suit any existing stock container if required.

AW Engineering (Hereford) Ltd.
Stoney Street
Madley
Hereford
HR2 9NQ

Tel : 01981 251558
Fax : 01981 251568

Web : www.awtrailers.co.uk
Email : sales@awtrailers.co.uk

There are 6.5, 7, 8, 10 Tonne Standard Spec, 10 Tonne High Spec, 12 Tonne and 14 Tonne models available. A 16 Tonne Ultima Bale Trailer is also available.

Standard Features include :-



- Rubber rear number plate mounting flap



- Guarded LED full road lighting using maintenance free LED lamps (no bulbs)



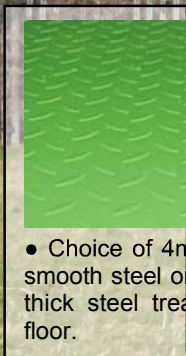
- Heavy duty box section side rails running along both edges of the bed for superior strength & rigidity



- Heavy duty box section removable rear bale ladders with reinforced sockets.



- Various tyre options are available including 435/50R19.5 tyres as shown above.



- Choice of 4mm smooth steel or 6mm thick steel tread floor.

Choice of sprung or bogie suspension (on tandem axle models)



Sprung Suspension

Beam axles with heavy duty multi-leaf semi-elliptical sprung suspension for a smoother ride and reduced tyre wear.



Bogie Suspension

Stub axles with 'rocking beam' suspension complete with 60mm diameter chrome pivot pin and bronze bushes.

- High spec wide track agricultural axles.
- Hydraulically operated independent cam brakes.
- Brake hoses fitted with 1/4" ISO female couplings.
- Heavy duty wheel rims fitted with high spec tyres.



We also manufacture stock containers. Please see separate leaflet for details.



- Heavy duty 16mm diameter rope hooks along side, front and rear
- Reinforced bale ladder sockets with pinch bolt

along rigidity.

mm thick
r 4.5mm
ad plate



- Heavy duty RHS drawbar fitted deep into chassis.
- Large support gusset to reduce stress and increase rigidity
- Superior grade drawbar eye 40mm thick
- Wide removable skid with carrier on chassis
- Stalk on front of drawbar complete with fittings for easy storage of hydraulic hoses and lighting cable.



- Fixed headboard 460mm (18") high with rigid box section corner posts.
- LED maintenance free front lights
- Commercial ratchet type parking brake
- Removable box section ladder

Option Extras available include :-



- Strap / rope box



- Rear LED beacon - protected



- Sprung drawbar

- Removable side rails



- Timber floor (softwood or hardwood)



	6.5 Tonne Bale Trailer		7 Tonne Bale Trailer		8 Tonne Bale Trailer		10 Tonne Standard Spec Bale Trailer	
Body length	5485mm	18ft	5485mm	18ft	6705mm	22ft	7925mm	26ft
(Please note that the above are standard lengths. We can make the bed longer or shorter if requested.)								
Body width	2500mm	8ft 2"	2500mm	8ft 2"	2500mm	8ft 2"	2500mm	8ft 2"
Floor thickness	4mm smooth steel or 4.5mm steel tread plate		4mm smooth steel or 4.5mm steel tread plate		4mm smooth steel or 4.5mm steel tread plate		4mm smooth steel or 4.5mm steel tread plate	
Chassis	180 x 75 PFC 7" x 3" PFC		180 x 75 PFC 7" x 3" PFC		200 x 75 PFC 8" x 3" PFC		200 x 75 PFC 8" x 3" PFC	
Axle size	80mm 6 stud		70mm 6 stud		80mm 6 stud		80mm 6 stud	
Number of axles	Single		Tandem		Tandem		Tandem	
Brake size	300 x 60mm		300 x 60mm		300 x 60mm		300 x 60mm	
Wheel track	2000mm	6ft 7"	2000mm	6ft 7"	2000mm	6ft 7"	2000mm	6ft 7"
Tyre size	12.5/80 x 15.3 14 ply		11.5/80 x 15.3 10 ply		12.5/80 x 15.3 14 ply		12.5/80 x 15.3 14 ply	
O/all length	6850mm	22ft 6"	6850mm	22ft 6"	8230mm	27ft	9450mm	31ft
O/all width	2500mm	8ft 2"	2500mm	8ft 2"	2500mm	8ft 2"	2500mm	8ft 2"
Loading height	940mm	3ft 1"	990mm	3ft 3"	1035mm	3ft 5"	1035mm	3ft 5"

	10 Tonne High Spec Bale Trailer		12 Tonne Bale Trailer		14 Tonne Bale Trailer		16 Tonne Ultima Bale Trailer	
Body length	7925mm	26ft	7925mm	26ft	7925mm	26ft	7925mm	26ft
(Please note that the above are standard lengths. We can make the bed longer or shorter if requested.)								
Body width	2500mm	8ft 2"	2500mm	8ft 2"	2500mm	8ft 2"	2500mm	8ft 2"
Floor thickness	4mm smooth steel or 4.5mm steel tread plate		4mm smooth steel or 4.5mm steel tread plate		4mm smooth steel or 4.5mm steel tread plate		4mm smooth steel or 4.5mm steel tread plate	
Chassis	230 x 75 PFC 9" x 3" PFC		250 x 150 RHS 10" x 6" RHS		250 x 150 RHS 10" x 6" RHS		250 x 150 RHS 10" x 6" RHS	
Axle size	80mm 8 stud		127mm 10 stud commercial		127mm 10 stud commercial		127mm 10 stud commercial	
Number of axles	Tandem		Tandem		Tandem		Tandem	
Brake size	350 x 60mm		406 x 120mm		406 x 120mm		420 x 180mm	
Wheel track	1900mm	6ft 3"	1900mm	6ft 3"	1900mm	6ft 3"	1900mm	6ft 3"
Tyre size	385/65R22.5 'super single'		385/65R22.5 'super single'		385/65R22.5 'super single'		445/65R22.5 Kargo radial	
O/all length	9450mm	31ft	9450mm	31ft	9450mm	31ft	9450mm	31ft
O/all width	2500mm	8ft 2"	2500mm	8ft 2"	2500mm	8ft 2"	2500mm	8ft 2"
Loading height	1170mm	3ft 10"	1170mm	3ft 10"	1170mm	3ft 10"	1230mm	4ft

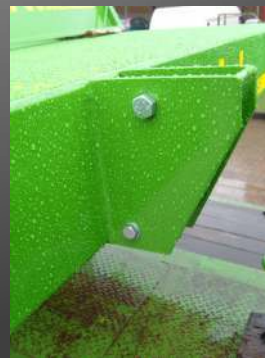
Bale Ladder Options



Cranked goalpost rear bale ladder



Goalpost rear bale ladder



Adjustable rear bale ladder socket



Cranked rear bale ladder

AW Engineering (Hereford) Ltd.
 Stoney Street,
 Madley,
 Hereford,
 HR2 0AR

Web : www.awtrailers.co.uk
Email : sales@awtrailers.co.uk

Tel : 01981 251558
Fax : 01981 251568